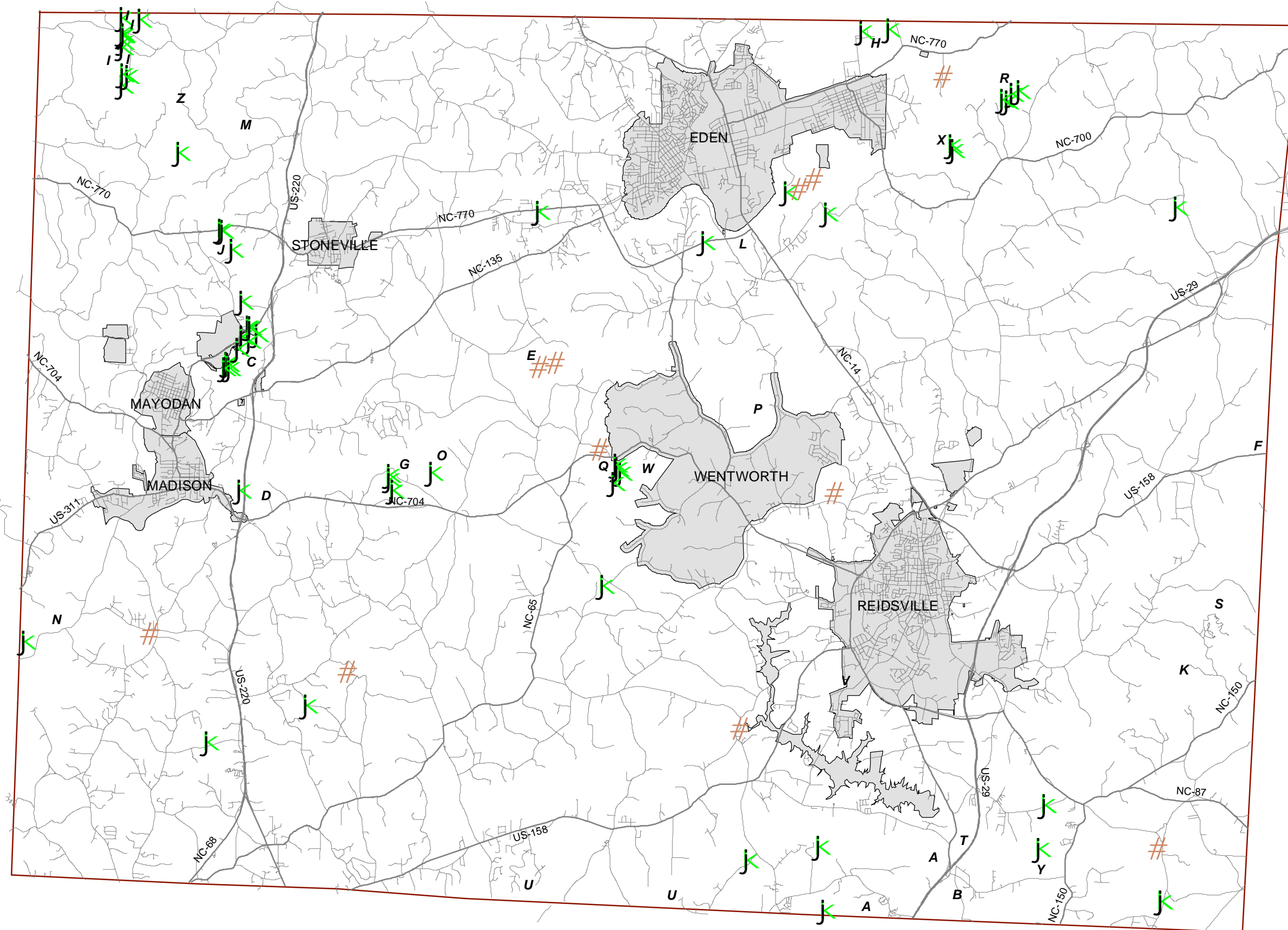


# MAP 13 A



- A. Benaja Alluvial Forest and Creek Wetlands 226.76 ac
- B. Candy Creek Beaver Pond 21.17 ac
- C. Cedar Mountain 151.63 ac
- D. Collins Bridge Bluffs 48.60 ac
- E. Dan River Aquatic Habitat 587.71 ac
- F. Hogan's Creek Wetland and Slopes 457.39 ac
- G. Jacobs Creek Slopes 14.51 ac
- H. Leaksville Loam Forests 163.02 ac
- I. Mayo River Anglin Mill Bluffs 113.09 ac
- J. Mayo River Aquatic Habitat 203.86 ac
- K. McKinney Road Forest 37.81 ac
- L. Mebane Bridge Slope 18.63 ac
- M. Paw Paw Creek Tributaries and Dike 123.27 ac
- N. Pine Hall Slopes 130.37 ac
- O. Pleasantville Basic Forest 137.01 ac
- P. Roach Creek Slope 46.30 ac
- Q. Rock House Creek Slopes 85.68 ac
- R. Rocky Branch Conglomerate Exposure 60.13 ac
- S. Tate Road Forest 269.97 ac
- T. Troublesome Creek Marsh 92.63 ac
- U. Upper Haw River Floodplain and Slopes 855.94 ac
- V. Warf Airfield Forest 67.58 ac
- W. Wentworth Woods 123.24 ac
- X. Wide Mouth Creek Conglomerate Exposure 24.10 ac
- Y. Williamsburg Alluvial Forest 150.20 ac
- Z. Winfree's Overlook 185.83 ac
- Total Acres "4,396.43"

- # HISTORIC SITES
- J NATURAL HERITAGE ELEMENTS
- 🌳 NATURAL HERITAGE AREAS
- 🏘 MUNICIPALITY

## ROCKINGHAM COUNTY DEVELOPMENT CONSTRAINTS NATURAL HERITAGE AND HISTORIC SITES

NOT ALL HISTORIC SITES SHOWN DUE TO ADDRESS RESTRICTIONS